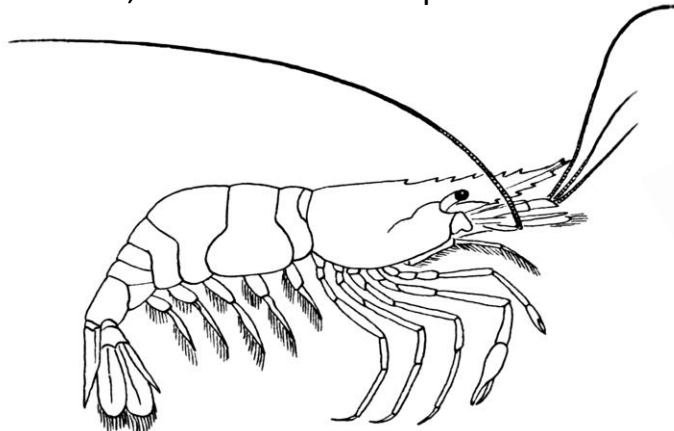


Welcome to **Huka**
PRAWN PARK

New Zealand's only Prawn Farm.

As you tour around Huka Prawn Park find the answers to the following questions?

1. Huka Prawn Park is located beside the?
a Hudson River b Tongariro River c Waikato River d Lake Taupo
2. In what year was Huka Prawn Park established? _____
3. River Water is heated using excess hot water from the W _____ G _____ Power Station next door, to a temperature of approximately __°. This water is then pumped around the entire park.
4. The scientific name of Huka Prawn Park's prawns are *Macrobrachium Rosenbergii*. What country did these prawns originate from?
a Taiwan b Malaysia c Australia d Canada
5. How many female prawns are there to every male prawn? _____
6. Draw on the prawn below, where the female prawn carries her eggs?



7. What two items are mixed together to make a baby prawns dinner?.



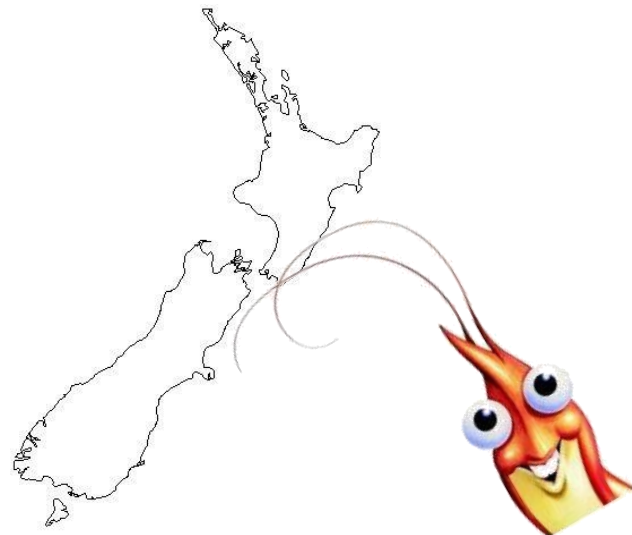
8. How big does a prawn have to be before it will be moved to the outside ponds?
a 1 gram b 10 grams c 1 kilogram d As long as they huddle together it doesn't matter!

9. What is the reason for the 'habitats' within the Prawn Tanks and Ponds?

10. If prawns lose an arm or leg in a fight, it will regrow as long as they are under _____ months of age.

11. Once a week, one of the Prawn Ponds is harvested. How is this done?
a The harvesters fish for the prawns with bait and fishing rods
b A large net is dragged through the pond.
c An explosive is thrown into the pond and the prawns all float to the top.
d The pond is drained and a team of harvesters pick up every prawn by hand.

12. Huka Prawn Park can produce up to 32 tonnes of prawns every year. Indicate on the map, where in New Zealand, you could purchase some of these prawns.



13 WORDFIND

Find the following words:

WAIRAKEI WATER
PRAWN EGG
MALAYSIA POND
WET PINCER
MALE HEAT

W	A	T	E	R	I	P	A
E	A	A	N	K	A	I	L
T	A	I	P	T	S	N	P
U	T	I	R	Y	X	C	O
E	K	A	A	A	B	E	N
L	B	L	W	O	K	R	D
A	A	S	N	G	G	E	O
M	H	E	A	T	H	O	I

14 Draw a picture of yourself hand feeding the baby prawns.

